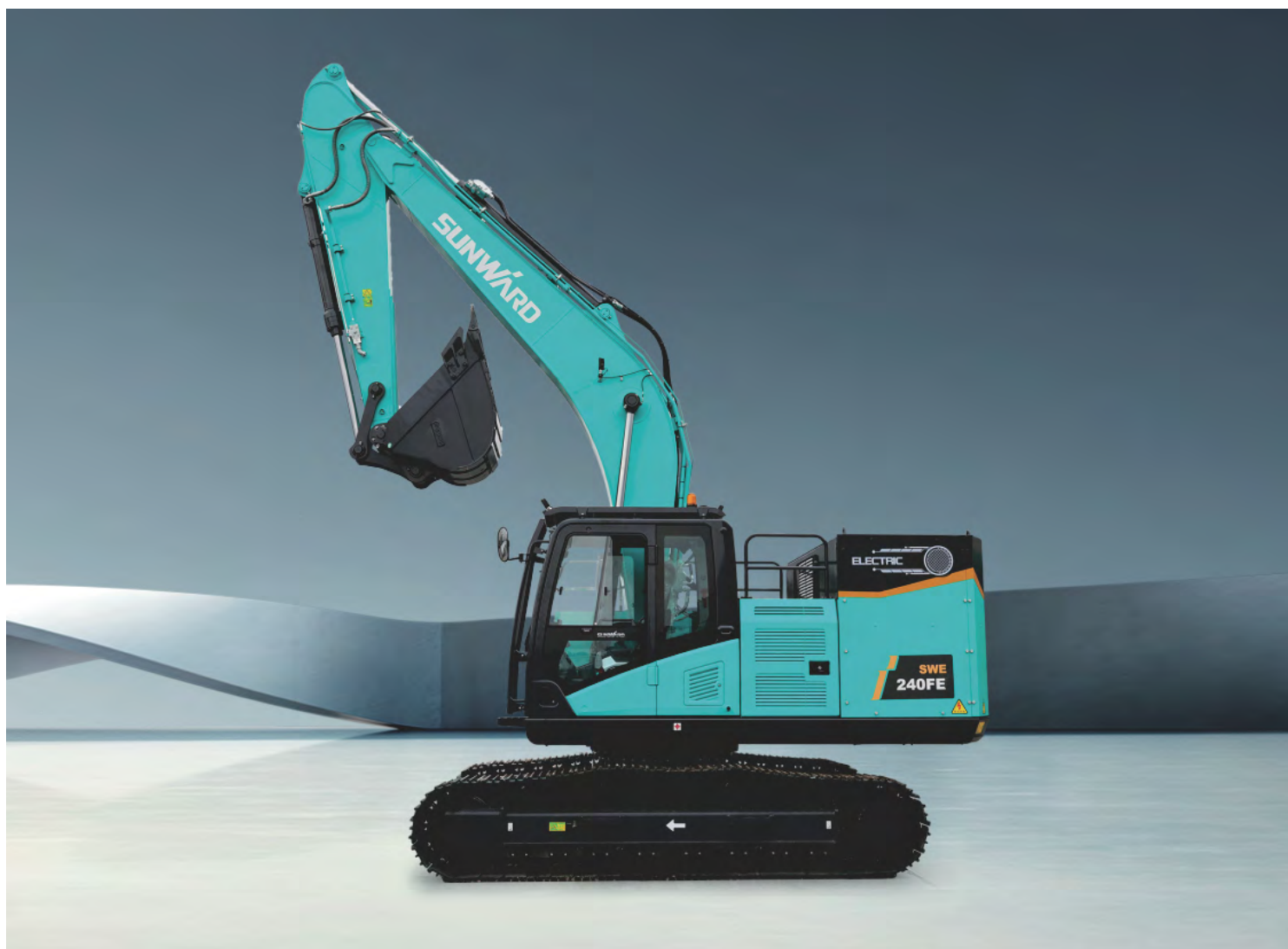




SWE240FE MEDIUM-EXCAVATOR

◆ Total weight:24.0t ◆ Engine power:120kW/2000rpm ◆ Bucket capacity:1.0m³



- ◆ Advanced frequency conversion drive control technology, multi-bus and Ethernet communication technology and battery integrated management system control technology are used.
- ◆ The two-stage heating mode makes it possible to start the normal operation of the battery motor by heating even in extremely cold temperatures, which is more applicable to various environments.
- ◆ In the integrated heat dissipation mode, the hydraulic oil and motor are integrated, and the cabin air conditioning and battery heat dissipation are integrated, to adjust the heat dissipation energy and reduce energy consumption according to the ambient temperature automatically.
- ◆ Intelligent and unmanned operations can be realized by installing intelligent remote control devices, which reduces the danger and intensity of manpower for a wider range of applications.

TECHNICAL PARAMETERS



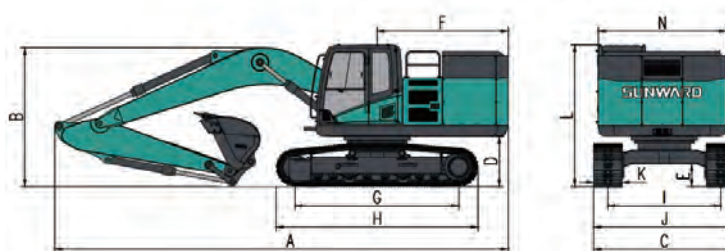
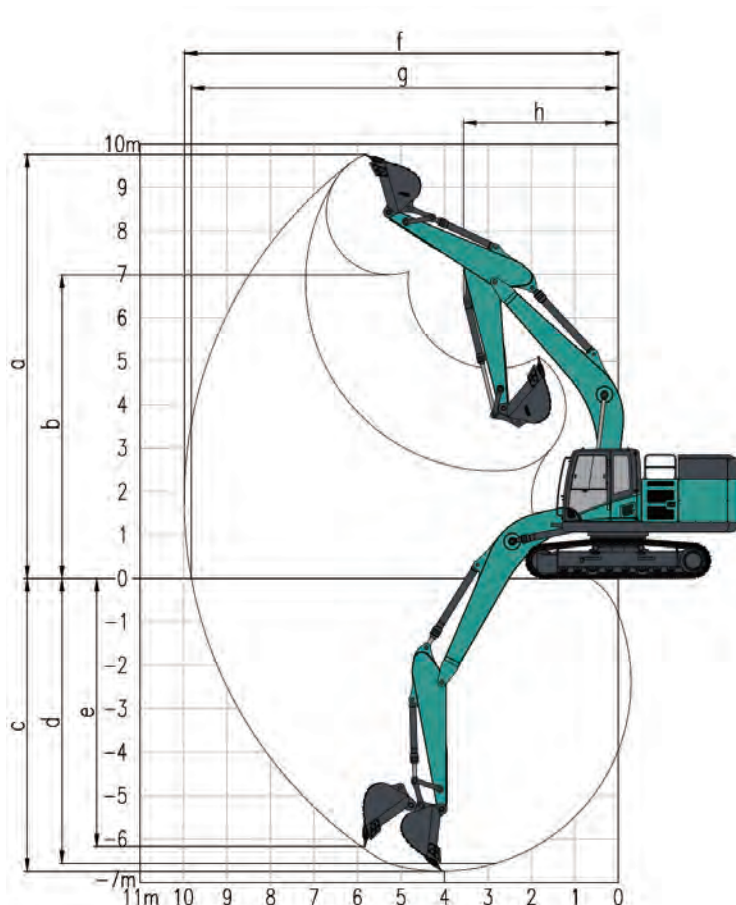
SWE240FE

Performance parameters

Specification		
Working weight	kg	24000
Bucket capacity	m ³	1.0
Motor		
Motor type		Permanent Magnet Synchronous
Rated power	kW	120/2000
Rated torque	N·m	1170
Battery		
Type		Lithium iron phosphate
Capacity	kWh	422.87
Voltage	V	618.24
Indicative time	h	6-8
Hydraulic system		
Main pump type		Plunger variable pump
Max.flow	L/min	2X234
System pressure	Mpa	31.4/34.3
Pilot pump type		Gear pump
Max.flow	L/min	20
Pressure	Mpa	3.9
Performance		
Swing speed	rpm	11.8
Travel speed	km/h	5.0/3.2
Climbing capacity	%	70
Ground pressure	kPa	52.4
Oil tank capacity		
Hydraulic oil	L	300

Working range

	Boom length	mm	5700
	Arm length	mm	2920
a	Max.digging height	mm	9740
b	Max.dump height	mm	6980
c	Max.digging depth	mm	6750
d	Digging depth (2.44m:horizontal)	mm	6560
e	Max.vertical digging depth	mm	6175
f	Max.digging reach	mm	9945
g	Max.ground digging reach	mm	9820
h	Min.front swing radius	mm	3560
i	Max.lifting height of dozer blade	mm	/
j	Max.digging depth of dozer blade	mm	/
	Digging force of bucket	kN	155
	Digging force of arm	kN	110



Outline dimension

A	Total length	mm	9575	H	Track Length	mm	4260
B	Total height	mm	2980	I	Track gauge	mm	2390
C	Total width	mm	2990	J	Track width	mm	2990
D	Counterweight Clearance	mm	1070	K	Shoe Width	mm	600
E	Chassis ground clearance	mm	480	L	Max height of total machine	mm	2980
F	Tail swing radius	mm	2996	N	Swing width	mm	2710
G	Track length on the ground	mm	3465				

★The above parameters may be different due to product upgrading.

SUNWARD INTELLIGENT EQUIPMENT CO.,LTD.

Add: Sunward Industrial Park, No. 1335 Liangtang Road (E), Xingsha, Changsha, Hunan, China

E-mail:international@sunward.cc Web: <http://global.sunward.com.cn/>

