

INNOVATION LEADS TO VALUE



SUNWARD

SWE335F-1 LARGE-EXCAVATOR

◆ Total weight: 32.8t

◆ Engine power: 212kW/2000rpm

◆ Bucket capacity: 1.7m³



◆ New shape

The new appearance of the new generation of F series family could create a magnificent style of the whole machine. More mining elements are added to modeling design to show its beauty and power at the same time.

◆ High power reserve and large digging force

The machine is equipped with a powerful 212kW Isuzu engine.

High efficiency and energy saving hydraulic system is used, and the bucket digging force could reach 214kN, which can be easily handled in heavy-duty working conditions.

◆ High efficiency and energy saving

High-efficiency, large-displacement hydraulic system is used, and 2.9m short bucket bar and 1.7m³ double-curve reinforced bucket are provided to realize the perfect proportion of the working device according to the working conditions.

◆ Reliable and durable

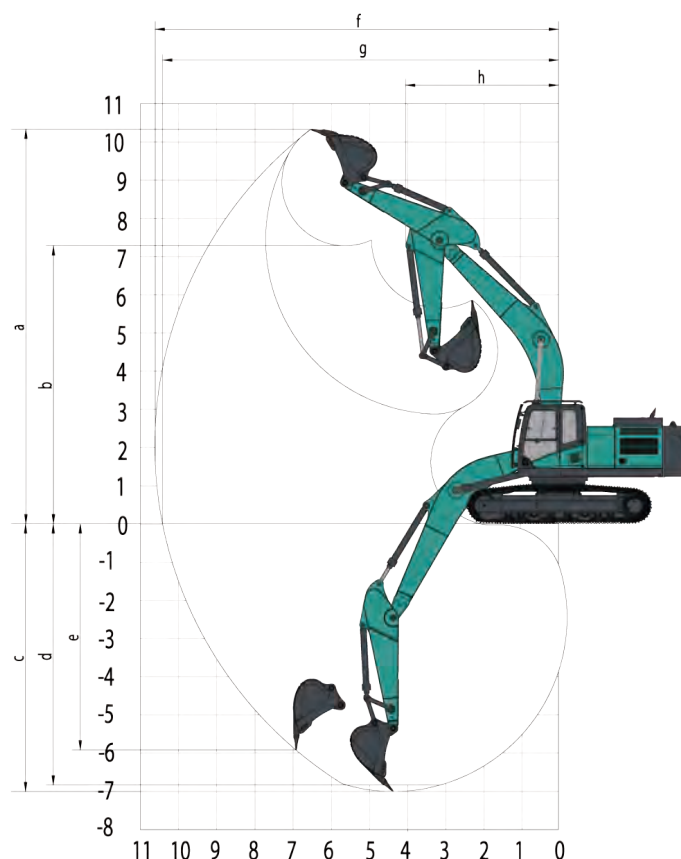
Heavy load working device with 36t class die forging support.

The lower vehicle assembly is installed with 36t class chassis system, and the four wheels and one belt are reliable and durable, with excellent carrying capacity.



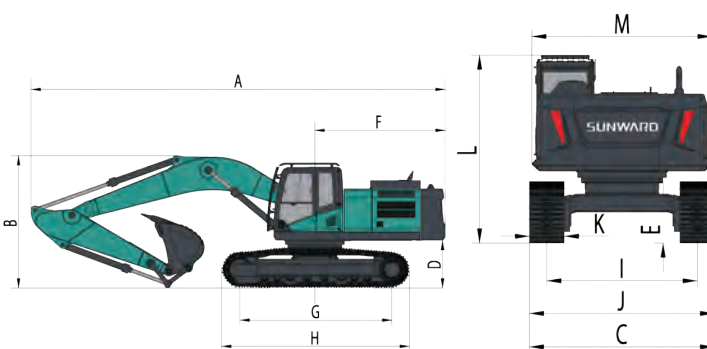
Performance parameters

working weight	kg	32800
Standard bucket capacity	m ³	1.7
Performance		
Bucket Digging Force	kN	214
Boom Digging Force	kN	165
Max. Traction	kN	297
Max climbing angle	%	70
Ground Pressure	kPa	62.3
Travel Speed(Max/Min)	km/h	5.8/3.6
Swing speed	rpm	11.42
Oil tank capacity		
Fuel Tank	L	520
Hydraulic Oil Tank	L	400
Engine		
Brand		ISUZU
Model		GH-6HK1
Power	kw/rpm	212/2000
Max torque	N.m/rpm	1080/1500
Displacement	L	7.79



Working range

	Boom length	mm	6150
	Arm length	mm	2900
a	Max. Cutting Height	mm	10330
b	Max. Loading Height	mm	7280
c	Max. Digging Depth	mm	7010
d	Digging Depth(2.44 meter)	mm	6840
e	Max. Vertical Wall Digging Depth	mm	5920
f	Max. Digging Reach	mm	10570
g	Max. Reach at Ground Level	mm	10370
h	Min swing radius in the front	mm	4005



Outline dimension

A	Total length	mm	10866	H	Track Length	mm	4860
B	Total height	mm	3600	I	Shoe distance	mm	2590
C	Total width	mm	3190	J	Track width	mm	3190
D	Counterweight Clearance	mm	1235	K	Shoe Width	mm	600
E	Chassis ground clearance	mm	530	L	Max height of total machine	mm	3600
F	Tail swing radius	mm	3520	N	Swing width	mm	3110
G	Track length on the ground	mm	3930				

★The above parameters may be different due to product upgrading.

